

Mohawk Finishing Products

Division of RPM Wood Finishes Group, Inc.

Product Data Sheet

Leather Repair Toner

M109-50XX (3 colors - 13 oz. aerosol)

Product Description: Mohawk Leather Repair Toners are medium pigmented translucent toners designed to apply semi-transparent color. Used to darken the color of a Leather Repair Basecoat or to apply a stipple affect in two-tone leather finishes.

The Leather Repair Aerosols are used to color over damages on pigmented leather (also known as top coated) where there is color loss or the leather has been repaired. The aerosols are designed to enable you to match most of the leather furniture that is popular today. They are especially effective at repairing two-tone finishes which are otherwise so difficult to match. The kit includes Basecoats for matching background colors, Toners to add color over the Basecoats and to apply the stippled effect in two-tones, Color Adjusters for fine-tuning the color of the repair, and Leather/Vinyl Finish™ to adjust the sheen.

Advantages

- Translucent color – medium pigment load
- Use to add color to base coats – generally to darken
- Used to create stippled effect on two-toned leathers
- Used much like toners for wood

Characteristics:

Solids % (wt): 2.62*

Solids % (vol): 5.00*

Dry time: Air dry @ 77 F, 50% relative humidity

To recoat: 8 minutes

Package life: 3 years

Sheen: satin

PWR category: VFL

PWR Category limit: 1.54

PWR of product: 0.814*

*Includes propellant; values vary between colors

All values theoretical; not intended to be exact

QC specifications.

HMIS: Health – 2, Flammability – 4, Reactivity – 0, Personal Protection – X

Specifications:

Directions: Translucent color coating used to tone and darken Leather Repair Basecoat Aerosol. Also used to add stipple effect of two-tone leather. SHAKE WELL. Use principles of color theory to pick the appropriate Leather Repair Toner and apply lightly over Leather Repair Basecoat to tone and darken as needed. To create the stipple effect, apply in short bursts (quickly depress nozzle fully, then release). Do not force dry. Clean spray button immediately by spraying with can upside down until no more product comes out. If clogged, remove spray button with a twisting motion and clean. Gently twist button onto can with opening turned away from you.

Safety and Other Precautions: Read MSDS for precautions before using product.

MSDS: If Material Safety Data Sheet is required, contact:

Mohawk Finishing Products

Division of RPM Wood Finishes Group, Inc.

P.O. Box 22000

Phone: 1-800-545-0047

Hickory, NC 28603

Fax: 1-800-721-1545

INFORMATION and LIMITED WARRANTY DISCLAIMER

To the best of our knowledge the technical data contained herein is true and accurate on the date of publication and is subject to change without prior notice. User must contact Mohawk Finishing Products to verify correctness before specifying or ordering. No guarantee of accuracy is given or implied. We assume no responsibility for coverage, performance or injuries resulting from use. The data on this sheet represents estimated and typical values. Since application variables are a major factor in product performance, this information should serve only as a general guide. We sell the products without warranty. Users assume all responsibility and liability for use. Loss or damage arising from the use of our products whether used alone or in combination with our products is the responsibility of the user. **MOHAWK FINISHING PRODUCTS MAKES NO WARRANTIES, EXPRESS OR IMPLIED, AND DISCLAIMS ALL IMPLIED WARRANTIES INCLUDING WARRANTIES OF MERCHANTABILITY OR FITNESS FOR A PARTICULAR USE OR FREEDOM FROM PATENT INFRINGEMENT. MOHAWK FINISHING PRODUCTS WILL NOT BE LIABLE FOR ANY SPECIAL, INCIDENTAL OR CONSEQUENTIAL DAMAGES.** Your only remedy for any defect in this product is the replacement of the defective product, or a refund of its purchase price, at our option. The information on this sheet, as well as the products referenced herein, shall be considered "Confidential Information". Wet samples and uncured samples of these products shall be maintained as confidential and shall not be disclosed to any third party without the prior written permission of Mohawk Finishing Products.

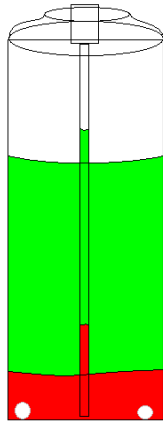
Aerosol Products

The Importance of Clearing the Tube Before Using an Aerosol

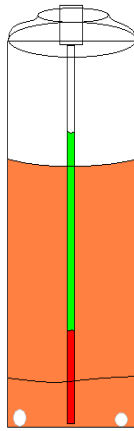
Clearing the tube of an aerosol can is important any time the aerosol has sat for any amount of time, especially before the first use.

This is a simple procedure that involves properly agitating the can (shaking for one full minute) and then spraying it for approximately 3 seconds in a safe direction but not onto the part that is going to be sprayed. This allows the material that remains in the dip tube that cannot be agitated to be evacuated and not dispensed on the job part.

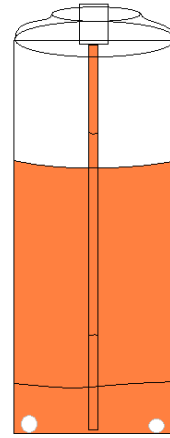
When an aerosol can is filled the agitator balls are first inserted and then the can is filled with paint (stain, glaze, lacquer, etc.). The next step is the insertion of the valve which is secured to the can by crimping of the valve ring. After the valve is secured propellant is added to the can through the valve. The propellant pressurizes the can. This pressure immediately forces a small amount of paint into the dip tube of the valve. This paint in the tube settles the same as the paint in the can. Pigments, dyes and sheen control agents, which provide color and sheen to the paint, separate from the solvents and propellant in the can. When the can is agitated by shaking, the agitator balls help mix the pigments and dyes with the solvents. This agitation, however, has little effect on paint in the tube, thus it needs to be evacuated before applying the paint to the substrate and repair.



Before Shaking



After Shaking



After Shaking and Clearing Tube

The Importance of Clearing the Tube After Using an Aerosol

It is equally important to clear the tube after each use to help prevent clogging and spitting in the future, especially for aerosols that contain pigment or flattening paste.

To clear the tube, turn the aerosol can upside down and spray in a safe direction depressing the spray head until the liquid is no longer dispensed (only air). Then use a cloth to wipe away any liquid left on the orifice of the spray head. This procedure clears the nozzle and the spray head so the contents of the can won't clog them.

After the can sits for several days, some of the contents will re-enter the dip tube. Therefore, use the procedure above to assure that the unmixed contents of the tube aren't sprayed on your project.

